



SOLFA GROUP

[www.solfagroup.com](http://www.solfagroup.com)

## COMPANY PROFILE

### WHO WE ARE

Our company SOLFA S.R.L. – [www.solfagroup.com](http://www.solfagroup.com) – founded in the year 1964 by the owner, Mr. Siro Solfa, headquartered in Lugo di Grezzana (Verona) Italy, operates successfully on the national such as on the international natural stone market selling marbles, granites, travertines, onyx, sandstones, quartzite, and in order to expand the range of offered product, we marginally even propose products made of marble-cement, marble-resin and quartz resin conglomerate.



Several members of the SOLFA family are employed in the various company departments with important strategic and managerial functions, thus guaranteeing a solid structure and company consolidation that strengthens day by day.



*Nature gives us earth, water and fire  
Our creativity makes our works unique*



SOLFA GROUP

[www.solfagroup.com](http://www.solfagroup.com)



*A young and motivated staff works with passion and enthusiasm in the best possible way, supporting the managerial figures, in order to guarantee a continuous and constant growth of the company.*



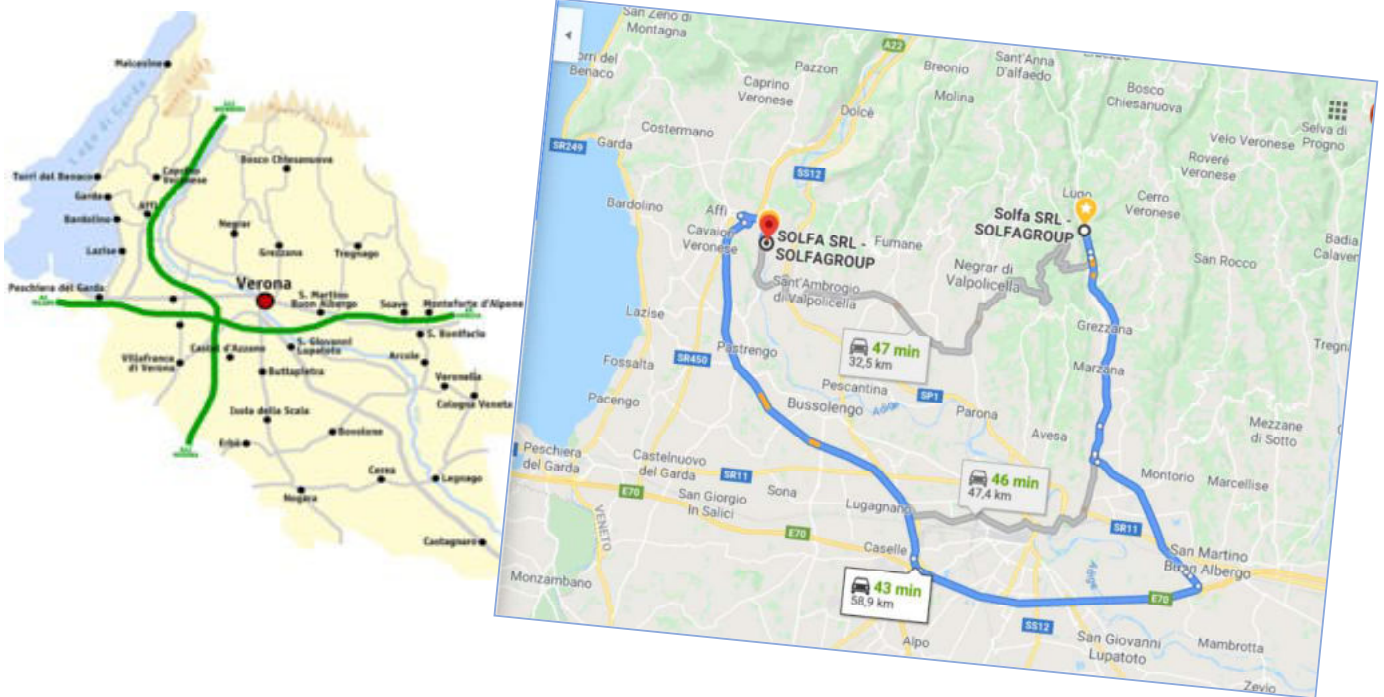
*Galleria del Marmo*



# SOLFA GROUP

[www.solfagroup.com](http://www.solfagroup.com)

WHERE WE ARE



*Over the years, the company has gradually developed, expanding the production site in the main primary headquarter in Valpantena in Lugo di Grezzana, opening then a wholly owned branch also in Rivoli Veronese, not far from the motorway exit of Affi (Verona), the main production district of the Verona stone sector, strategic-commercial point and crossroads for international logistics.*







SOLFA GROUP

[www.solfagroup.com](http://www.solfagroup.com)



*the production site  
in Lugo Verona  
with the large block storage*



*An internal logistics service allows frequent connections between the two production units and the different warehouses, thus optimizing delivery times.*





# SOLFA GROUP

[www.solfagroup.com](http://www.solfagroup.com)

## THE PRODUCTION

*The main production site is located in LUGO di GREZZANA -VERONA, where there are also the administrative offices, the technical offices and part of the commercial offices, as well as the storage of blocks, semi-finished and finished products.*



*Always attentive to the new trends and market's requests, we buy the raw material directly in the quarries all over the world and work it internally, obtaining both the semi-finished and the finished product, i.e. slabs, floors, coverings, stairs and various products.*



**WE BUY THE RAW MATERIAL IN THE BEST QUARRIES IN THE WORLD**





**SOLFA GROUP**

[www.solfagroup.com](http://www.solfagroup.com)



*passion and skills since more than 50 years !*

## **PASSION AND EXPERIENCE FOR OVER 50 YEARS!**

*Our production cycle takes place entirely within our companies, thanks to the professionalism of our employees and the use of modern machinery, that guarantees quality production.*



*the polishing plant and  
the quality slabs selection*



**SOLFA GROUP**

[www.solfagroup.com](http://www.solfagroup.com)



*In the year 2019, a modern and automated production plant has been built for the slabs' finishing in the headquarter in Lugo di Grezzana, in order to further increase the quality level of the semi-finished product and consequently of the finished product as well.*

*The space of a unique span shed has been optimized to be able to insert two totally independent processing lines, working skilfully interconnected through an appropriate internal connection system.*





SOLFA GROUP

[www.solfagroup.com](http://www.solfagroup.com)



*The resin plant  
and slabs consolidation*

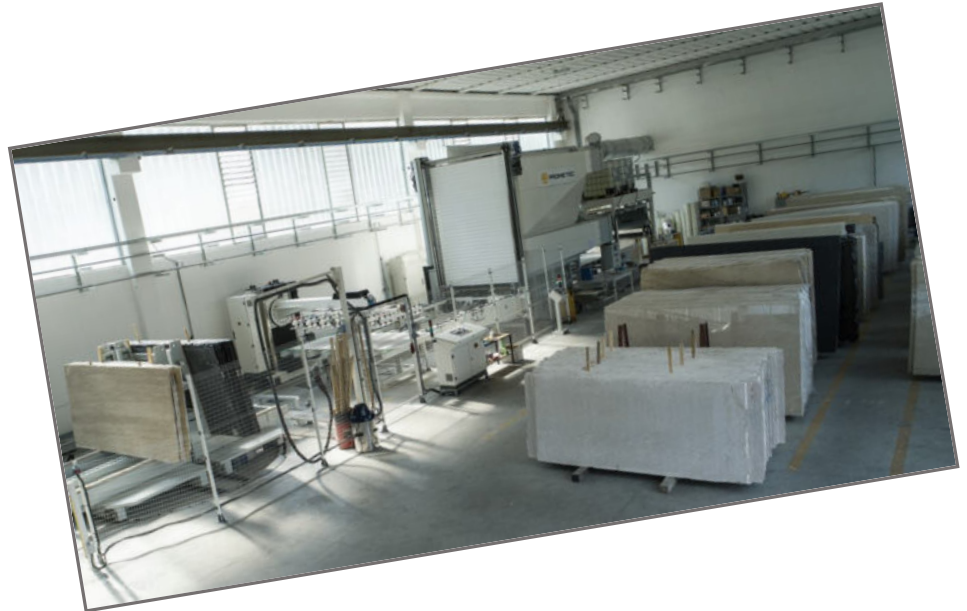






SOLFA GROUP

[www.solfagroup.com](http://www.solfagroup.com)



*In RIVOLI VERONESE, we have a new granite slab polishing system that is used to prepare other finishes in very short delivery times.*



**SOLFA GROUP**

*[www.solfagroup.com](http://www.solfagroup.com)*





SOLFA GROUP

[www.solfagroup.com](http://www.solfagroup.com)

# Galleria del Marmo







SOLFA GROUP

[www.solfagroup.com](http://www.solfagroup.com)





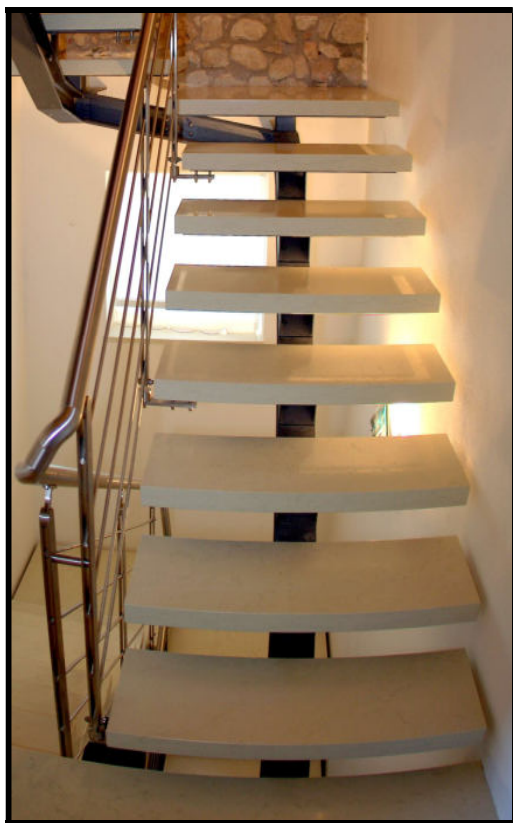
SOLFA GROUP

*www.solfagroup.com*

COMPANY FOCUS

[www.biancoperlino.it](http://www.biancoperlino.it)

*The technical knowledge of the stone BIANCO PERLINO / BIANCONE and our big production capacity, consolidated in over 55 years of experience, allows us to offer this beautiful and unique product, entirely Italian, to all customers at an excellent price-quality ratio.*





**SOLFA GROUP**

*www.solfagroup.com*



*We can safely assure that we are able to saw large quantities of BIANCO PERLINO blocks and transform them in short delivery times into the requested product, such as slabs, floors, cut-to-sizes and skirtings.*

*Our ambition is to make this all-Italian marble, typical of our beautiful Veneto Region more and more known and appreciated; a very particular stone which no one will be ever able to reproduce or to imitate, due to its typical composition and characteristics, unique in the world.*





SOLFA GROUP

[www.solfagroup.com](http://www.solfagroup.com)

## COMPANY FOCUS

[www.brecciasarda.com](http://www.brecciasarda.com)

*In addition to BIANCO PERLINO, DAINO BRECCIA SARDA is also an important leading material for the SOLFA company.*

*This is a marble extracted in the area of Orosei in Sardinia, which can be defined as a "classic" material, which means free from moment's fashions and for which the national and international market demand is stable and constant.*



*That's why we always try to have a wide variety of types in blocks and sizes available. The veined Sardinian breccia is a uniform and compact marble, characterized by a rather "wavy" design in which both the dark veins and the background mass are variegated.*



SOLFA GROUP

[www.solfagroup.com](http://www.solfagroup.com)

## SOME PROJECTS



STONE GREY/PIETRA GREY -

“KITON” SHOP  
MILAN ITALY





**SOLFA GROUP**

*www.solfagroup.com*



**AL JAZZERA  
TOWER  
SQM 25.000**

**TILES AND  
WALL  
COVERINGS  
MADE OF  
BOTTICINO  
EMPERADOR  
LIGHT,  
EMPERADO  
DARK,  
GIALLO ORO**





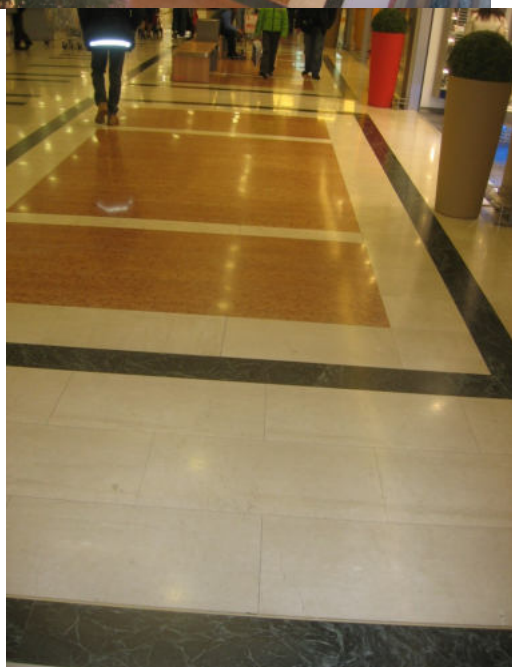


SOLFA GROUP

[www.solfagroup.com](http://www.solfagroup.com)

SHOPPING  
CENTER –  
ROMA EST –

SQM 20.000  
BOTTICINO,  
ROSSO VERONA,  
VERDE  
GUATEMALA





**SOLFA GROUP**

*www.solfagroup.com*

**CENTRO DIREZIONALE  
VERONA EST**

**SQM 23.000  
BIANCO PERLINO  
GRIGIO LUNA**







**SOLFA GROUP**

*www.solfagroup.com*



**CASINO' ZAGABRIA  
CROATIA**

**DAINO BRECCIA  
SARDA  
STATUARIO  
VERDE INDIA**



**EMPERADOR DARK - FIOR DI BOSCO**



**SILK GEORGETTE**





**SOLFA GROUP**

*[www.solfagroup.com](http://www.solfagroup.com)*

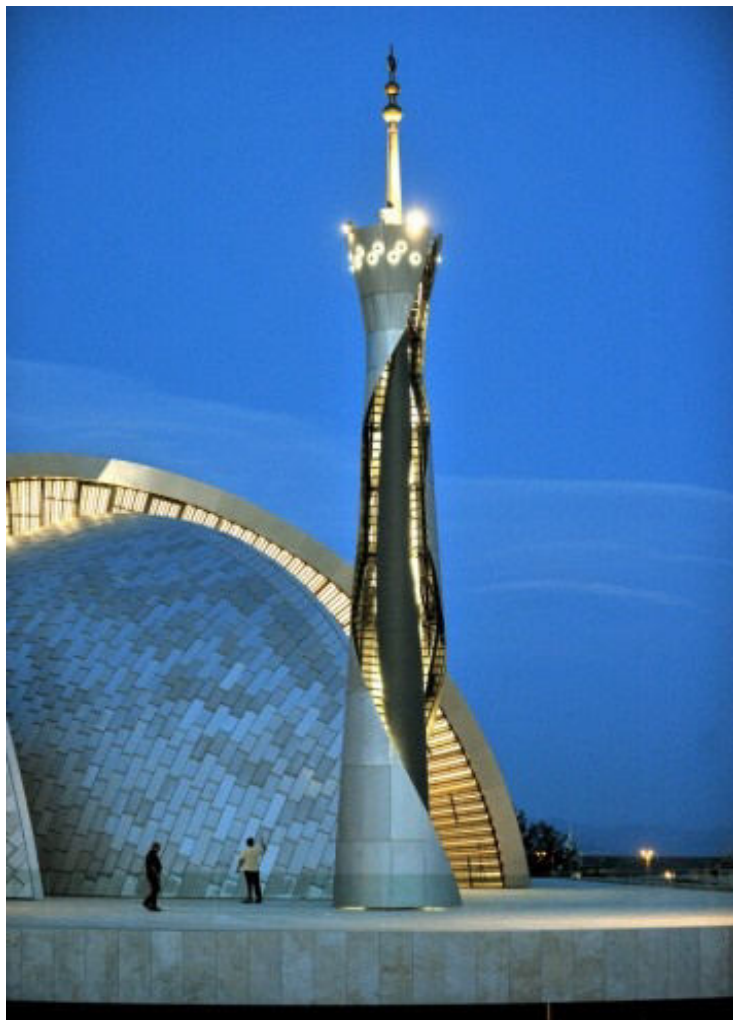


CALACATTA VIOLA



SOLFA GROUP

[www.solfagroup.com](http://www.solfagroup.com)



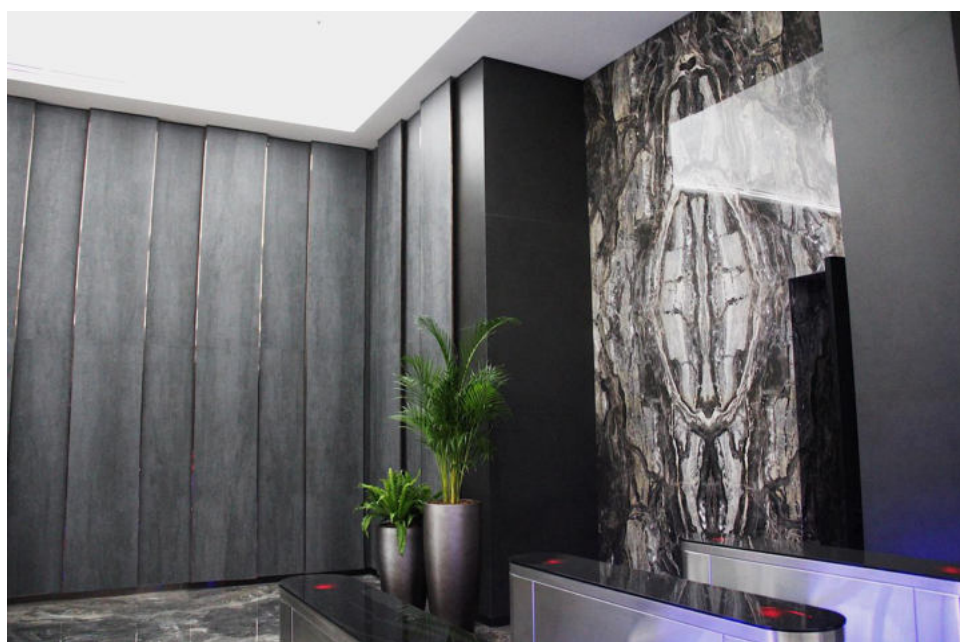
TRAVERTINO ROMANO CLASSICO





SOLFA GROUP

*[www.solfagroup.com](http://www.solfagroup.com)*



ARABESCATO OROBICO GRIGIO





SOLFA GROUP

[www.solfagroup.com](http://www.solfagroup.com)



ARABESCATO OROBICO GRIGIO



SAHARA NOIR



SOLFA GROUP

*[www.solfagroup.com](http://www.solfagroup.com)*



TRAVERTINO SILVER RAPOLANO



**SOLFA GROUP**

*[www.solfagroup.com](http://www.solfagroup.com)*



**DAINO BRECCIA SARDA**





**SOLFA GROUP**

*www.solfagroup.com*



[WWW.SOLFAGROUP.COM](http://WWW.SOLFAGROUP.COM)

[WWW.BIANCOPERLINO.IT](http://WWW.BIANCOPERLINO.IT)

[WWW.BRECCIASARDA.COM](http://WWW.BRECCIASARDA.COM)

**SOLFA S.R.L.**

VIA DOMENICO DA LUGO, 50 – 37023 LUGO DI GREZZANA VERONA (ITALY) - TEL. 0039 045 8801155

VIA DELL'INDUSTRIA SUD, 8 LOC. CASON – 37010 RIVOLI VERONESE VERONA (ITALY) - TEL. 0039 045 7238019